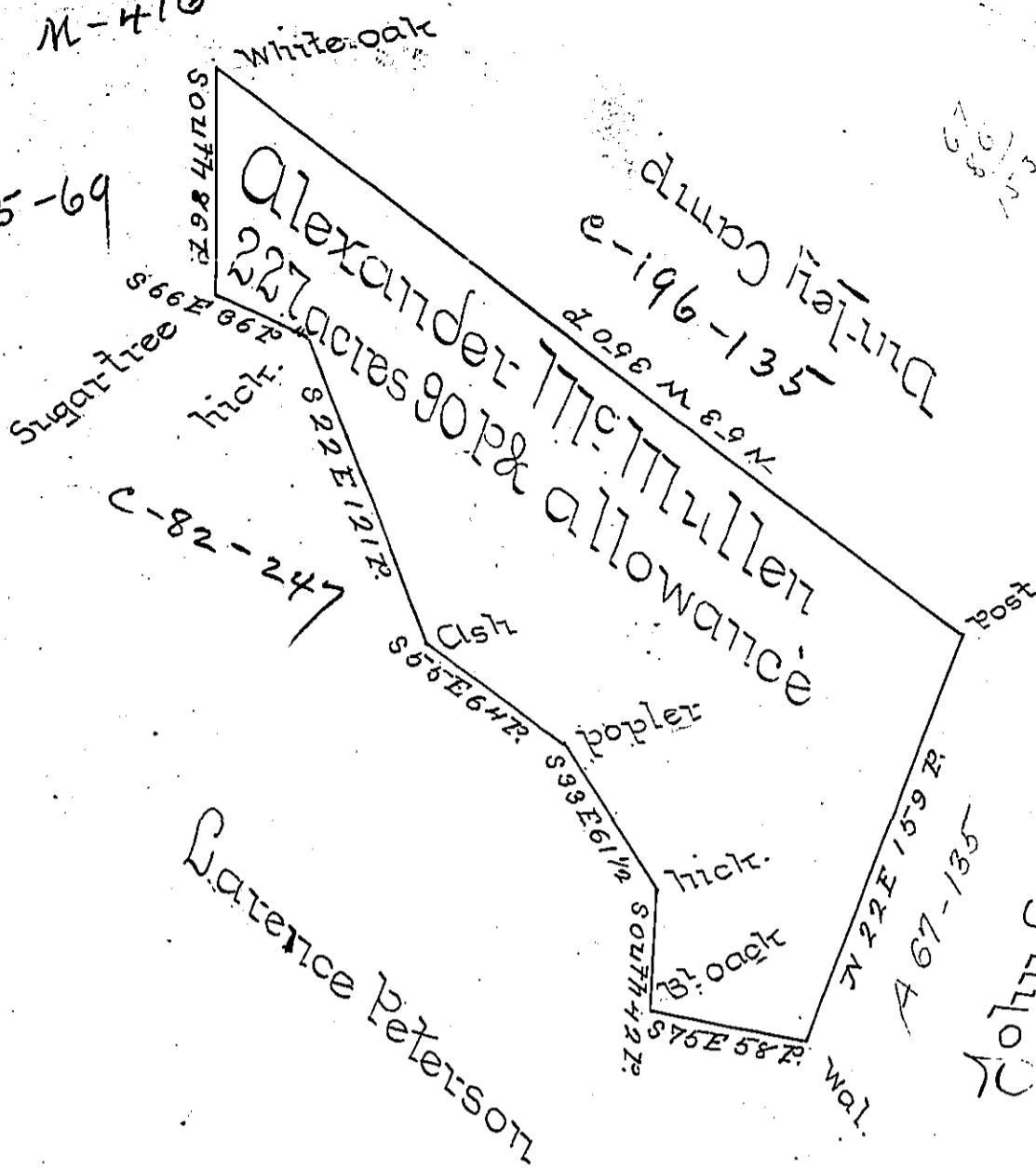


M-416

57

P-14-88
1776

A-15-69



The Draught of a Tract of Land situate on the Waters of
 Turtle Creek in Pitt Township Westmoreland County
 formerly Cumberland County containing Two Hundred
 and Twenty Seven Acres and Ninety perches and The
 usual allowance of Six Percent for Roads Surveyed for
 Alexander McMillen The Twelfth Day of February one
 Thousand Seven hundred and Seventy four in pursu-
 ance of an order of Survey Dated at Philadelphia the third day
 of April A.D. 1769 and Number 167.

To John Lukens Esq:
 Surveyor General

Wm. Coulter
 Assistant to
 Wm. Thompson D.S.

IN TESTIMONY that the above is a copy of the original remaining on file in
 the Department of Internal Affairs of Pennsylvania, made
 conformably to an Act of Assembly approved the 16th day of
 February, 1833, I have hereunto set my Hand and caused
 the Seal of said Department to be affixed at Harrisburg,
 this second day of May 1899.



James W. Latta
 Secretary of Internal Affairs.